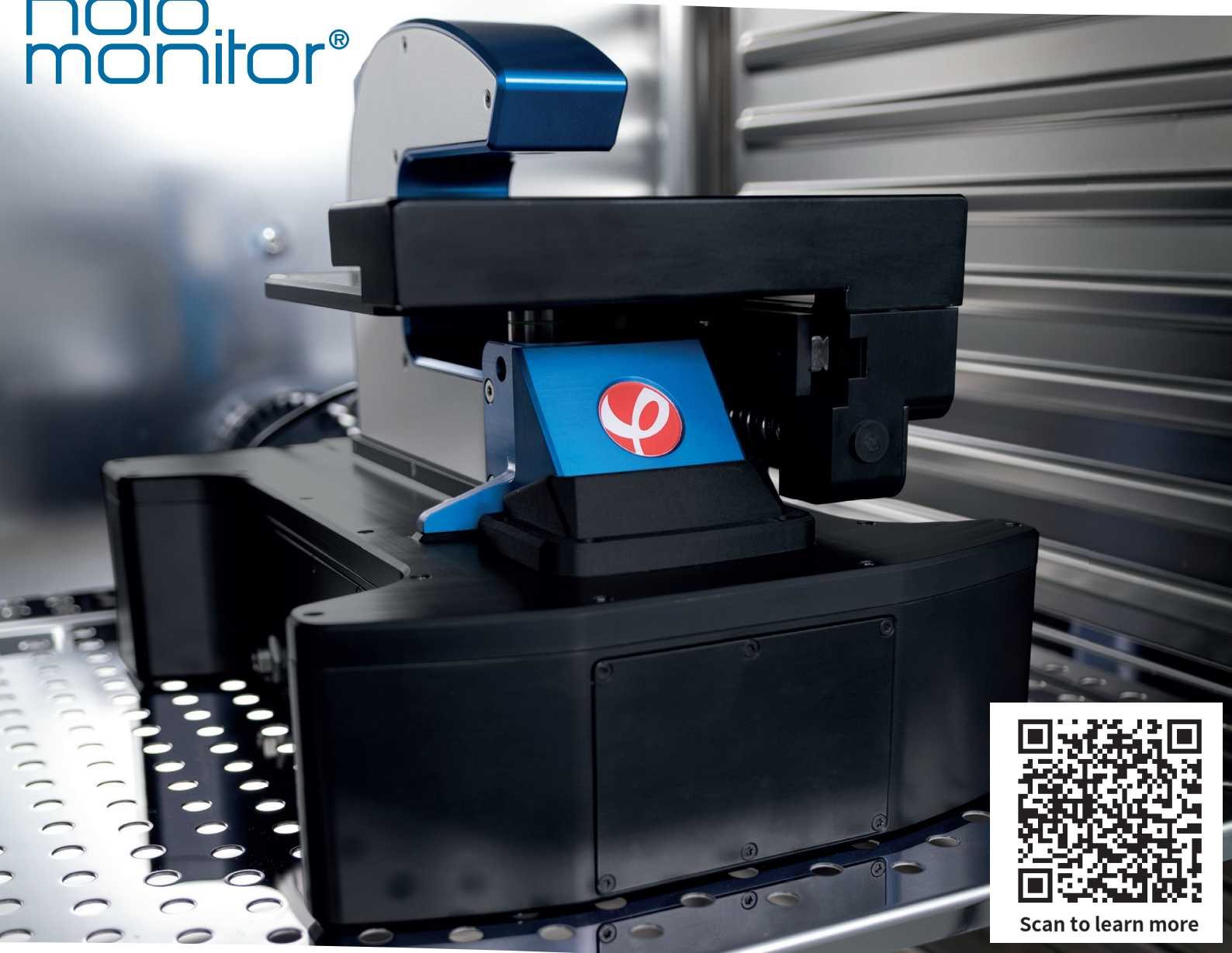


holo monitor®



Scan to learn more

HoloMonitor® M4FL

Featured Applications

Cell death

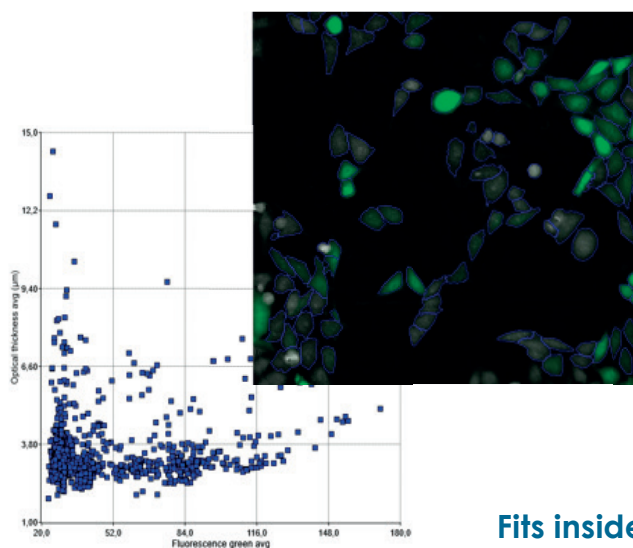
Co-culture

Uptake assay

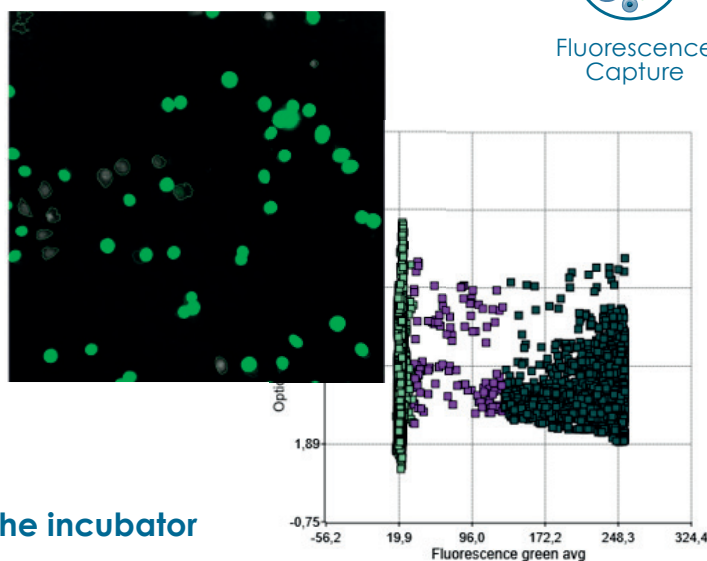
Reporter Gene
Expression

Transfection
Efficiency

Live Cell
Staining



Co-culture



Cell Death

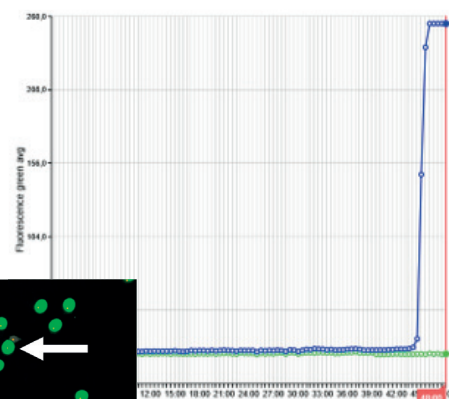
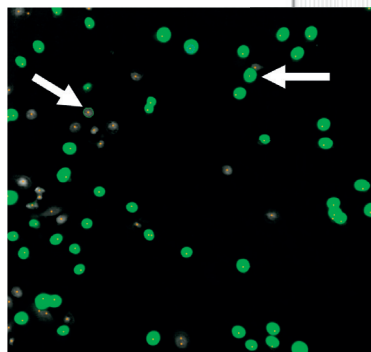
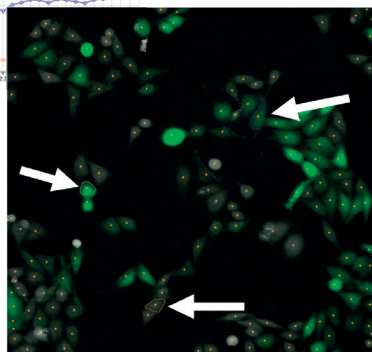
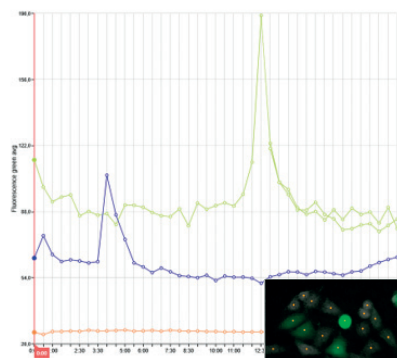
Fits inside the incubator

Holography with fluorescence

Less fluorescence capture needed

Less photocytotoxicity

More quantitative data



Technical Specifications

HoloMonitor® Fluorescence Add-on

1-channel fluorescence: Optimized for EGFP (FITC-Cy2)

Excitation/Emission: 470/525 nm

Exposure time: 1 – 1000 ms

Field of view: 567 µm × 567 µm, 0.25 mm²

Gain: 1 – 4

Image Resolution: 1 µm

Image size: 1024 × 1024 pixels

Dimensions: 310 x 180 x 85 mm (W × D × H)

Weight: 4.5 kg

Power: < 5 W

Interface: USB connector